

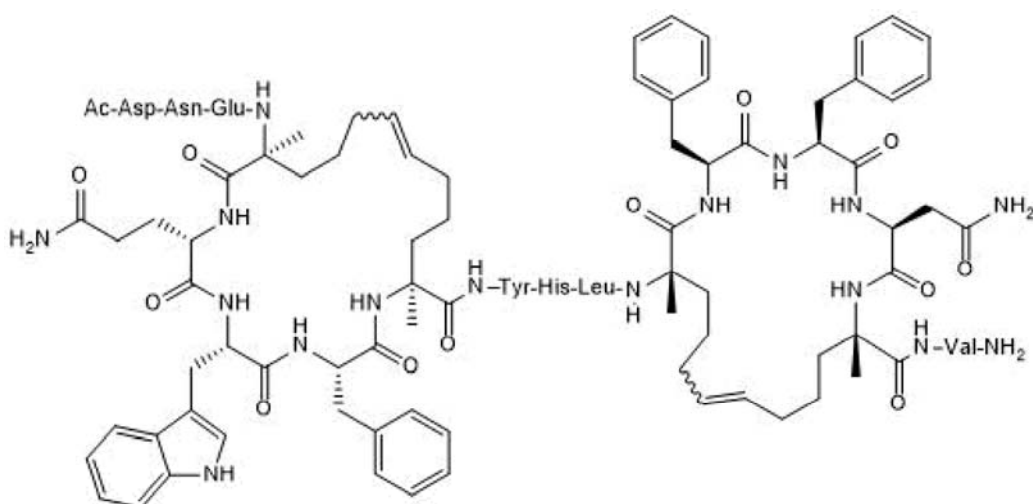
Product Name: StRIP16

Catalog No.: 6575

Batch No.: 1

1. PHYSICAL AND CHEMICAL PROPERTIES

Batch Molecular Formula: C₁₁₆H₁₅₄N₂₄O₂₆
Batch Molecular Weight: 2300.61
Physical Appearance: White lyophilised solid
Net Peptide Content: 82.4%
Counter Ion: TFA
Solubility: Soluble to 1 mg/ml in 40% acetonitrile / water
Storage: Store at -20°C
Peptide Sequence:



2. ANALYTICAL DATA

HPLC: Shows 99.2% purity
Mass Spectrum: Consistent with structure

Caution - Not Fully Tested • Research Use Only • Not For Human or Veterinary Use

bio-techne.com
info@bio-techne.com
techsupport@bio-techne.com

North America
 Tel: (800) 343 7475

China
info.cn@bio-techne.com
 Tel: +86 (21) 52380373

Europe Middle East Africa
 Tel: +44 (0)1235 529449

Rest of World
www.tocris.com/distributors
 Tel: +1 612 379 2956

Product Name: StRIP16

Catalog No.: 6575

Batch No.: 1

Description:

Rab8a GTPase-binding stapled peptide ($K_d = 12.7 \mu\text{M}$). Cell permeable; localizes to the endomembrane system.

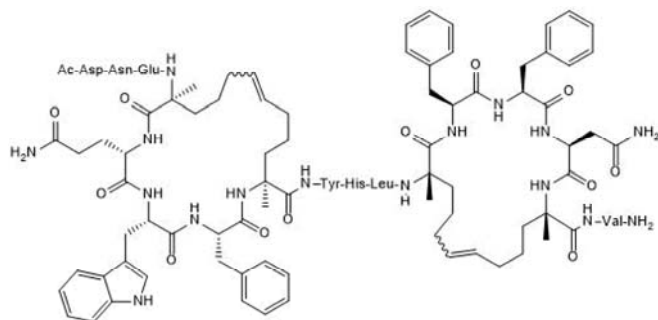
Physical and Chemical Properties:

Batch Molecular Formula: $\text{C}_{116}\text{H}_{154}\text{N}_{24}\text{O}_{26}$

Batch Molecular Weight: 2300.61

Physical Appearance: White lyophilised solid

Peptide Sequence:



Storage: Store at -20°C

Solubility & Usage Info:

Soluble to 1 mg/ml in 40% acetonitrile / water

This product is supplied as a lyophilized solid and may be very hard to visualize. Solutions should be made by adding solvent directly to the vial. The vial should then be vortexed vigorously to ensure the product has completely dissolved.

Net Peptide Content: 82.4% (Remaining weight made up of counterions and residual water).

Counter Ion: TFA

Stability and Solubility Advice:

Some solutions can be difficult to obtain and can be encouraged by rapid stirring, sonication or gentle warming (in a $45\text{-}60^{\circ}\text{C}$ water bath).

Peptides in solution are much less stable than in lyophilized form. This is especially true for peptides whose sequences contain amino acids such as Cys, Met, Trp, Asn, Gln, and N-terminal Glu.

Therefore we recommend storing peptides in solution for as short a time as possible. Avoid repeated freeze thaw cycles by dividing the peptide solution into aliquots and storing the aliquots at -20°C . Any portion of an aliquot unused after thawing should be discarded.

Peptides stored in solution can occasionally be susceptible to bacterial degradation. We recommend using sterile solutions or passing the peptide solution through a $0.2 \mu\text{m}$ filter to remove potential bacterial contamination whenever possible.

References:

Cromm *et al* (2016) Protease-resistant and cell-permeable double-stapled peptides targeting the Rab8a GTPase. *ACS Chem.Biol.* **11** 2375. PMID: 27336832.

Caution - Not Fully Tested • Research Use Only • Not For Human or Veterinary Use

bio-techne.com

info@bio-techne.com

techsupport@bio-techne.com

North America

Tel: (800) 343 7475

China

info.cn@bio-techne.com

Tel: +86 (21) 52380373

Europe Middle East Africa

Tel: +44 (0)1235 529449

Rest of World

www.tocris.com/distributors

Tel:+1 612 379 2956