

**Product Name:** Diprotin A

**Catalog No.:** 6019

**Batch No.:** 3

CAS Number: 90614-48-5

IUPAC Name: L-Isoleucyl-L-prolyl-L-isoleucine

**1. PHYSICAL AND CHEMICAL PROPERTIES**

**Batch Molecular Formula:** C<sub>17</sub>H<sub>31</sub>N<sub>3</sub>O<sub>4</sub>.H<sub>2</sub>O

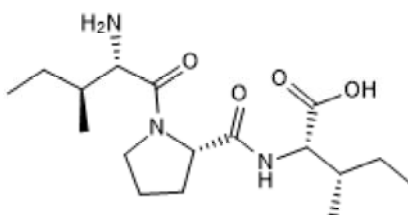
**Batch Molecular Weight:** 359.47

**Physical Appearance:** White solid

**Solubility:** water to 100 mM

**Storage:** Store at -20°C

**Batch Molecular Structure:**



**2. ANALYTICAL DATA**

**HPLC:** Shows 99.9% purity

**Mass Spectrum:** Consistent with structure

**Microanalysis:**

	Carbon	Hydrogen	Nitrogen
Theoretical	56.8	9.25	11.69
Found	56.87	9.17	11.74

Caution - Not Fully Tested • Research Use Only • Not For Human or Veterinary Use

**bio-techne.com**

info@bio-techne.com

techsupport@bio-techne.com

**North America**

Tel: (800) 343 7475

**China**

info.cn@bio-techne.com

Tel: +86 (21) 52380373

**Europe Middle East Africa**

Tel: +44 (0)1235 529449

**Rest of World**

www.tocris.com/distributors

Tel:+1 612 379 2956

**Product Name:** Diprotin A

**Catalog No.:** 6019

**Batch No.:** 3

CAS Number: 90614-48-5

IUPAC Name: L-Isoleucyl-L-prolyl-L-isoleucine

**Description:**

Dipeptidyl peptidase IV (DPP-IV) inhibitor. Inhibits hydrolysis of incretins, regulating blood glucose levels. Induces Src and vascular endothelium-cadherin phosphorylation, increasing vascular permeability in the retina. Also increases number of viable phenotypic long term repopulating hematopoietic stem cells when harvesting mouse bone marrow in aerobic conditions.

**Physical and Chemical Properties:**

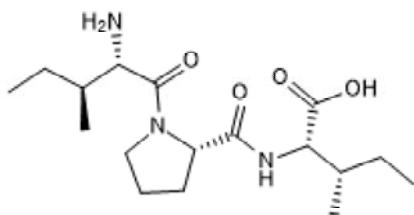
Batch Molecular Formula: C<sub>17</sub>H<sub>31</sub>N<sub>3</sub>O<sub>4</sub>.H<sub>2</sub>O

Batch Molecular Weight: 359.47

Physical Appearance: White solid

**Minimum Purity:** ≥98%

**Batch Molecular Structure:**



**References:**

**Lee et al** (2016) Dipeptidyl peptidase-4 inhibitor increases vascular leakage in retina through VE-cadherin phosphorylation. *Sci.Rep.* **6** 29393. PMID: 27381080.

**Lim et al** (2015) Role of dipeptidyl peptidase-4 inhibitors in new-onset diabetes after transplantation. *Korean J.Intern.Med.* **30** 759. PMID: 26552451.

**Juillerat-Jeaneret et al** (2014) Dipeptidyl peptidase IV and its inhibitors: therapeutics for type 2 diabetes and what else? *J.Med.Chem.* **57** 2197. PMID: 24099035.

**Storage:** Store at -20°C

**Solubility & Usage Info:**

water to 100 mM

**Stability and Solubility Advice:**

Some solutions can be difficult to obtain and can be encouraged by rapid stirring, sonication or gentle warming (in a 45-60°C water bath).

Information concerning product stability, particularly in solution, has rarely been reported and in most cases we can only offer a general guide. Our standard recommendations are:

**SOLIDS:** Provided storage is as stated on the product label and the vial is kept tightly sealed, the product can be stored for up to 6 months from date of receipt.

**SOLUTIONS:** We recommend that stock solutions, once prepared, are stored aliquoted in tightly sealed vials at -20°C or below and used within 1 month. Wherever possible solutions should be made up and used on the same day.

Caution - Not Fully Tested • Research Use Only • Not For Human or Veterinary Use

**bio-techne.com**

info@bio-techne.com

techsupport@bio-techne.com

**North America**

Tel: (800) 343 7475

**China**

info.cn@bio-techne.com

Tel: +86 (21) 52380373

**Europe Middle East Africa**

Tel: +44 (0)1235 529449

**Rest of World**

www.tocris.com/distributors

Tel:+1 612 379 2956