

Product Name: TAPI 0

Catalog No.: 5523

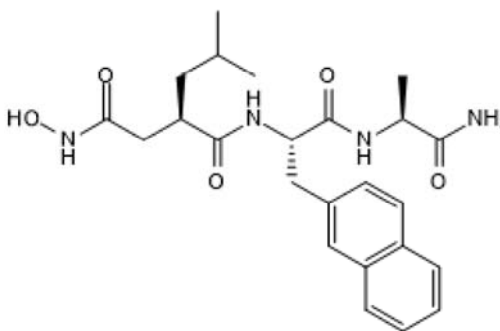
Batch No.: 5

CAS Number: 163958-73-4

IUPAC Name: *N*-[(2*R*)-2-[2-(Hydroxyamino)-2-oxoethyl]-4-methyl-1-oxopentyl]-3-(2-naphthalenyl)-L-alanyl-L-alaninamide

1. PHYSICAL AND CHEMICAL PROPERTIES

Batch Molecular Formula: C₂₄H₃₂N₄O₅
Batch Molecular Weight: 456.54
Physical Appearance: White solid
Net Peptide Content: 87%
Counter Ion: TFA
Solubility: Soluble to 10 mg/ml in DMSO
Storage: Store at -20°C
Peptide Sequence:



2. ANALYTICAL DATA

HPLC: Shows 96.3% purity
Mass Spectrum: Consistent with structure

3. AMINO ACID ANALYSIS DATA

| Amino Acid Theoretical | | Actual | |
|------------------------|------|--------|-----|
| Ala | 1.00 | 1.00 | Lys |
| Arg | | | Met |
| Asx | | | Phe |
| Cys | | | Pro |
| Glx | | | Ser |
| Gly | | | Thr |
| His | | | Trp |
| Ile | | | Tyr |
| Leu | | | Val |

Caution - Not Fully Tested • Research Use Only • Not For Human or Veterinary Use

Product Name: TAPI 0

Catalog No.: 5523

5

CAS Number: 163958-73-4

IUPAC Name: *N*-[(2*R*)-2-[2-(Hydroxyamino)-2-oxoethyl]-4-methyl-1-oxopentyl]-3-(2-naphthalenyl)-L-alanyl-L-alaninamide

Description:

TAPI 0 is an ADAM-17 (TACE) and MMP inhibitor; attenuates TNF- α processing. Acts in concert with GM6001 (Cat. No. 2983) to inhibit Chlamydia trachomatis growth.

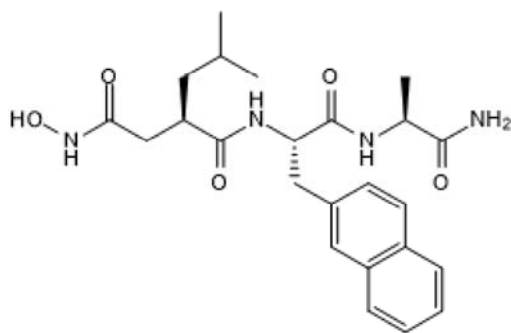
Physical and Chemical Properties:

Batch Molecular Formula: C₂₄H₃₂N₄O₅

Batch Molecular Weight: 456.54

Physical Appearance: White solid

Peptide Sequence:



Storage: Store at -20°C

Solubility & Usage Info:

Soluble to 10 mg/ml in DMSO

This product is supplied as a lyophilized solid and may be very hard to visualize. Solutions should be made by adding solvent directly to the vial. The vial should then be vortexed vigorously to ensure the product has completely dissolved. This product is supplied in gross weight.

Net Peptide Content: 87% (Remaining weight made up of counterions and residual water).

Counter Ion: TFA

Stability and Solubility Advice:

Some solutions can be difficult to obtain and can be encouraged by rapid stirring, sonication or gentle warming (in a 45-60°C water bath).

Peptides in solution are much less stable than in lyophilized form. This is especially true for peptides whose sequences contain amino acids such as Cys, Met, Trp, Asn, Gln, and N-terminal Glu.

Therefore we recommend storing peptides in solution for as short a time as possible. Avoid repeated freeze thaw cycles by dividing the peptide solution into aliquots and storing the aliquots at -20°C. Any portion of an aliquot unused after thawing should be discarded.

Peptides stored in solution can occasionally be susceptible to bacterial degradation. We recommend using sterile solutions or passing the peptide solution through a 0.2 μ m filter to remove potential bacterial contamination whenever possible.

References:

Rzeniewicz et al (2015) L-selectin shedding is activated specifically within transmigrating pseudopods of monocytes to regulate cell polarity *in vitro*. Proc.Natl.Acad.Sci.USA. **112** E1461. PMID: 25775539.

Balakrishnan et al (2006) Metalloprotease inhibitors GM6001 and TAPI-0 inhibit the obligate intracellular human pathogen Chlamydia trachomatis by targeting peptide deformylase of the bacterium. J.Biol.Chem. **281** 16691. PMID: 16565079.

Caution - Not Fully Tested • Research Use Only • Not For Human or Veterinary Use

bio-techne.com

info@bio-techne.com

techsupport@bio-techne.com

North America

Tel: (800) 343 7475

China

info.cn@bio-techne.com

Tel: +86 (21) 52380373

Europe Middle East Africa

Tel: +44 (0)1235 529449

Rest of World

www.tocris.com/distributors

Tel:+1 612 379 2956