

Product Name: D-(+)-Glucose

Catalog No.: 5504

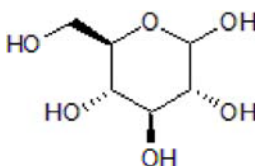
Batch No.: 4

CAS Number: 50-99-7

EC Number: 200-075-1

1. PHYSICAL AND CHEMICAL PROPERTIES

Batch Molecular Formula: C₆H₁₂O₆
Batch Molecular Weight: 180.16
Physical Appearance: White solid
Solubility: water to 500 mM
Storage: Store at RT
Batch Molecular Structure:



2. ANALYTICAL DATA

Purity: 100%
Heavy metals: <5 ppm
Endotoxin: <1.25 EU/g

Caution - Not Fully Tested • Research Use Only • Not For Human or Veterinary Use

Product Name: D-(+)-Glucose

Catalog No.: 5504

Batch No.: 4

CAS Number: 50-99-7

EC Number: 200-075-1

Description:

Naturally occurring monosaccharide.

Physical and Chemical Properties:

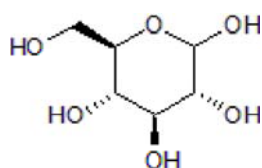
Batch Molecular Formula: C₆H₁₂O₆

Batch Molecular Weight: 180.16

Physical Appearance: White solid

Minimum Purity: >99%

Batch Molecular Structure:



Storage: Store at RT

Solubility & Usage Info:

water to 500 mM

Stability and Solubility Advice:

Some solutions can be difficult to obtain and can be encouraged by rapid stirring, sonication or gentle warming (in a 45-60°C water bath).

Information concerning product stability, particularly in solution, has rarely been reported and in most cases we can only offer a general guide. Our standard recommendations are:

SOLIDS: Provided storage is as stated on the product label and the vial is kept tightly sealed, the product can be stored for up to 6 months from date of receipt.

SOLUTIONS: We recommend that stock solutions, once prepared, are stored aliquoted in tightly sealed vials at -20°C or below and used within 1 month. Wherever possible solutions should be made up and used on the same day.

Caution - Not Fully Tested • Research Use Only • Not For Human or Veterinary Use

bio-techne.com

info@bio-techne.com

techsupport@bio-techne.com

North America

Tel: (800) 343 7475

China

info.cn@bio-techne.com

Tel: +86 (21) 52380373

Europe Middle East Africa

Tel: +44 (0)1235 529449

Rest of World

www.tocris.com/distributors

Tel:+1 612 379 2956