

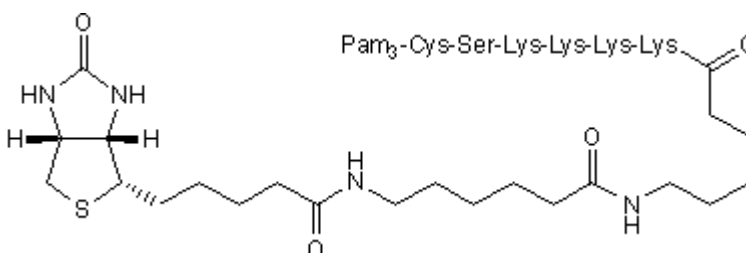
Product Name: Pam3CSK4 Biotin

Catalog No.: 4636

Batch No.: 1

**1. PHYSICAL AND CHEMICAL PROPERTIES**

**Batch Molecular Formula:** C<sub>103</sub>H<sub>192</sub>N<sub>14</sub>O<sub>17</sub>S<sub>2</sub>  
**Batch Molecular Weight:** 1962.85  
**Physical Appearance:** White lyophilised solid  
**Net Peptide Content:** 58%  
**Counter Ion:** TFA  
**Solubility:** Soluble to 0.80 mg/ml in 20% acetonitrile - 0.1% acetic acid  
**Storage:** Store at -20°C  
**Peptide Sequence:**



**2. ANALYTICAL DATA**

**HPLC:** Shows N/A% purity  
**Mass Spectrum:** Consistent with structure

**3. AMINO ACID ANALYSIS DATA**

Amino Acid	Theoretical	Actual	Amino Acid	Theoretical	Actual
Ala			Lys	4.00	3.89
Arg			Met		
Asx			Phe		
Cys			Pro		
Glx			Ser	1.00	1.11
Gly			Thr		
His			Trp		
Ile			Tyr		
Leu			Val		

Caution - Not Fully Tested • Research Use Only • Not For Human or Veterinary Use

**Product Name:** Pam3CSK4 Biotin

**Catalog No.:** 4636

**Batch No.:** 1

**Description:**

Biotinylated Pam3CSK4 (Cat. No. 4633), a Toll-like receptor 1/2 agonist.

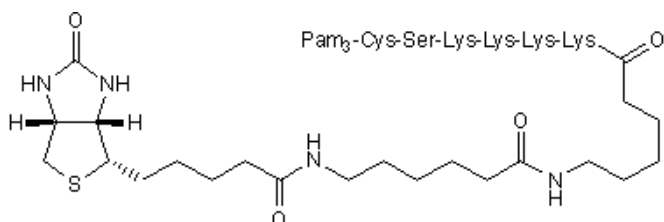
**Physical and Chemical Properties:**

Batch Molecular Formula: C<sub>103</sub>H<sub>192</sub>N<sub>14</sub>O<sub>17</sub>S<sub>2</sub>

Batch Molecular Weight: 1962.85

Physical Appearance: White lyophilised solid

**Peptide Sequence:**



**Storage:** Store at -20°C

**Solubility & Usage Info:**

Soluble to 0.80 mg/ml in 20% acetonitrile - 0.1% acetic acid

**Net Peptide Content:** 58% (Remaining weight made up of counterions and residual water).

**Counter Ion:** TFA

**Stability and Solubility Advice:**

Some solutions can be difficult to obtain and can be encouraged by rapid stirring, sonication or gentle warming (in a 45-60°C water bath).

Peptides in solution are much less stable than in lyophilized form. This is especially true for peptides whose sequences contain amino acids such as Cys, Met, Trp, Asn, Gln, and N-terminal Glu.

Therefore we recommend storing peptides in solution for as short a time as possible. Avoid repeated freeze thaw cycles by dividing the peptide solution into aliquots and storing the aliquots at -20°C. Any portion of an aliquot unused after thawing should be discarded.

Peptides stored in solution can occasionally be susceptible to bacterial degradation. We recommend using sterile solutions or passing the peptide solution through a 0.2 µm filter to remove potential bacterial contamination whenever possible.

**References:**

**Marre *et al*** (2010) Human integrin  $\alpha_3\beta_1$  regulates TLR2 recognition of lipopeptides from endosomal compartments. *PLoS One* **5** e12871. PMID: 20877569.

Caution - Not Fully Tested • Research Use Only • Not For Human or Veterinary Use

**bio-techne.com**  
info@bio-techne.com  
techsupport@bio-techne.com

**North America**  
Tel: (800) 343 7475

**China**  
info.cn@bio-techne.com  
Tel: +86 (21) 52380373

**Europe Middle East Africa**  
Tel: +44 (0)1235 529449

**Rest of World**  
www.tocris.com/distributors  
Tel: +1 612 379 2956