

Product Name: Phalloidin

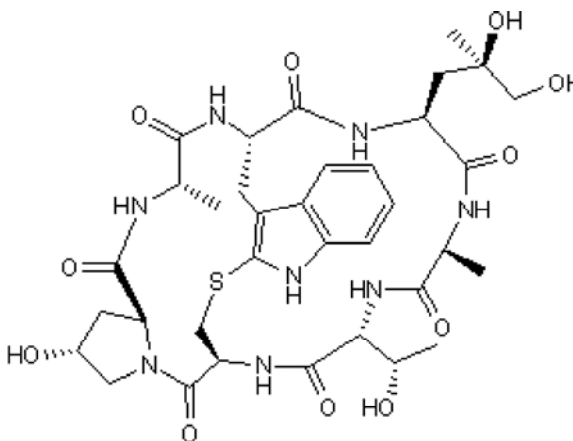
Catalog No.: 4535

Batch No.: 3

CAS Number: 17466-45-4

1. PHYSICAL AND CHEMICAL PROPERTIES

Batch Molecular Formula: C₃₅H₄₈N₈O₁₁S
Batch Molecular Weight: 788.87
Physical Appearance: White lyophilised solid
Solubility: Soluble to 1 mg/ml in water
Storage: Store at -20°C
Peptide Sequence:



2. ANALYTICAL DATA

HPLC: Shows >95% purity

Caution - Not Fully Tested • Research Use Only • Not For Human or Veterinary Use

bio-techne.com
info@bio-techne.com
techsupport@bio-techne.com

North America
Tel: (800) 343 7475

China
info.cn@bio-techne.com
Tel: +86 (21) 52380373

Europe Middle East Africa
Tel: +44 (0)1235 529449

Rest of World
www.tocris.com/distributors
Tel:+1 612 379 2956

Product Name: Phalloidin

Catalog No.: 4535

Batch No.: 3

CAS Number: 17466-45-4

Description:

Promotes actin polymerization. Decreases dissociation rate constant for actin subunits from filament ends; lowers critical concentration for polymerization.

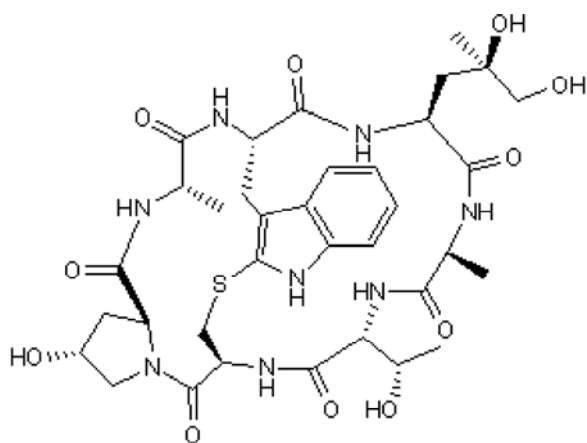
Physical and Chemical Properties:

Batch Molecular Formula: C₃₅H₄₈N₈O₁₁S

Batch Molecular Weight: 788.87

Physical Appearance: White lyophilised solid

Peptide Sequence:



Storage: Store at -20°C

Solubility & Usage Info:

Soluble to 1 mg/ml in water

This product is supplied as a lyophilized solid and may be very hard to visualize. Solutions should be made by adding solvent directly to the vial. The vial should then be vortexed vigorously to ensure the product has completely dissolved.

Stability and Solubility Advice:

Some solutions can be difficult to obtain and can be encouraged by rapid stirring, sonication or gentle warming (in a 45-60°C water bath).

Peptides in solution are much less stable than in lyophilized form. This is especially true for peptides whose sequences contain amino acids such as Cys, Met, Trp, Asn, Gln, and N-terminal Glu.

Therefore we recommend storing peptides in solution for as short a time as possible. Avoid repeated freeze thaw cycles by dividing the peptide solution into aliquots and storing the aliquots at -20°C. Any portion of an aliquot unused after thawing should be discarded.

Peptides stored in solution can occasionally be susceptible to bacterial degradation. We recommend using sterile solutions or passing the peptide solution through a 0.2 µm filter to remove potential bacterial contamination whenever possible.

References:

Diensthuber et al (2011) Phalloidin perturbs the interaction of human non-muscle myosin isoforms 2A and 2C1 with F-actin. *FEBS Lett.* **585** 767. PMID: 21295570.

Cooper (1987) Effects of cytochalasin and phalloidin on actin. *J. Cell Biol.* **105** 1473. PMID: 3312229.

Coluccio and Tilney (1984) Phalloidin enhances actin assembly by preventing monomer dissociation. *J. Cell Biol.* **99** 529. PMID: 6746738.

Wehland et al (1977) Phalloidin-induced actin polymerization in the cytoplasm of cultured cells interferes with cell locomotion and growth. *Proc. Natl. Acad. Sci. USA* **74** 5613. PMID: 341163.

Caution - Not Fully Tested • Research Use Only • Not For Human or Veterinary Use

bio-techne.com

info@bio-techne.com
techsupport@bio-techne.com

North America

Tel: (800) 343 7475

China

info.cn@bio-techne.com
Tel: +86 (21) 52380373

Europe Middle East Africa

Tel: +44 (0)1235 529449

Rest of World

www.tocris.com/distributors
Tel: +1 612 379 2956