

Product Name: Glimepiride

Catalog No.: 2396

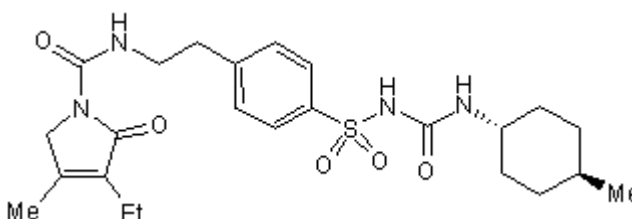
Batch No.: 1

CAS Number: 93479-97-1

IUPAC Name: 3-Ethyl-2,5-dihydro-4-methyl-N-[2-[4-[[[(*trans*-4-methylcyclohexyl)amino]carbonyl]amino]sulfonyl]phenyl]ethyl]-2-oxo-1*H*-pyrrole-1-carboxamide

1. PHYSICAL AND CHEMICAL PROPERTIES

Batch Molecular Formula: C₂₄H₃₄N₄O₅S
Batch Molecular Weight: 490.62
Physical Appearance: White solid
Solubility: DMSO to 25 mM
Storage: Store at +4°C
Batch Molecular Structure:



2. ANALYTICAL DATA

HPLC: Shows >98.9% purity
¹H NMR: Consistent with structure
Mass Spectrum: Consistent with structure

Microanalysis:

	Carbon	Hydrogen	Nitrogen
Theoretical	58.76	6.98	11.42
Found	58.39	6.94	11.2

Caution - Not Fully Tested • Research Use Only • Not For Human or Veterinary Use

Product Name: Glimepiride

Catalog No.: 2396

Batch No.: 1

CAS Number: 93479-97-1

IUPAC Name: 3-Ethyl-2,5-dihydro-4-methyl-N-[2-[4-[[[(*trans*-4-methylcyclohexyl)amino]carbonyl]amino]sulfonyl]phenyl]ethyl]-2-oxo-1*H*-pyrrole-1-carboxamide

Description:

Potent K_{ir6} (K_{ATP}) channel blocker and anti-diabetic agent. Inhibits pinacidil-activated cardiac K_{ir6} channels with an IC_{50} of 6.8 nM.

Physical and Chemical Properties:

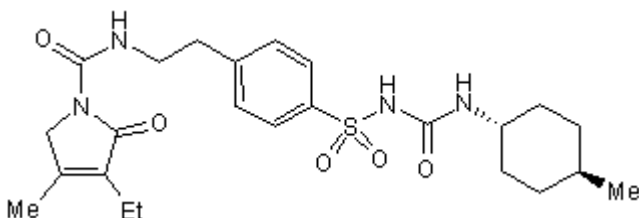
Batch Molecular Formula: $C_{24}H_{34}N_4O_5S$

Batch Molecular Weight: 490.62

Physical Appearance: White solid

Minimum Purity: >98%

Batch Molecular Structure:



Storage: Store at +4°C

Solubility & Usage Info:

DMSO to 25 mM

Stability and Solubility Advice:

Some solutions can be difficult to obtain and can be encouraged by rapid stirring, sonication or gentle warming (in a 45-60°C water bath).

Information concerning product stability, particularly in solution, has rarely been reported and in most cases we can only offer a general guide. Our standard recommendations are:

SOLIDS: Provided storage is as stated on the product label and the vial is kept tightly sealed, the product can be stored for up to 6 months from date of receipt.

SOLUTIONS: We recommend that stock solutions, once prepared, are stored aliquoted in tightly sealed vials at -20°C or below and used within 1 month. Wherever possible solutions should be made up and used on the same day.

References:

Lawrence et al (2002) Effect of metabolic inhibition on glimepiride block of native and cloned cardiac sacrolemmal K_{ATP} channels. *Br.J.Pharmacol.* **136** 746. PMID: 12086984.

Caution - Not Fully Tested • Research Use Only • Not For Human or Veterinary Use

bio-techne.com

info@bio-techne.com

techsupport@bio-techne.com

North America

Tel: (800) 343 7475

China

info.cn@bio-techne.com

Tel: +86 (21) 52380373

Europe Middle East Africa

Tel: +44 (0)1235 529449

Rest of World

www.tocris.com/distributors

Tel: +1 612 379 2956