

## Certificate of Analysis

[www.tocris.com](http://www.tocris.com)

**Product Name:** Indatraline hydrochloride

**Catalog No.:** 1588

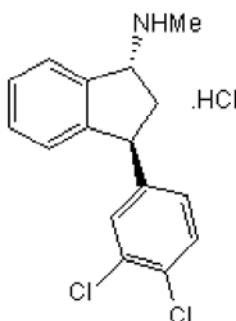
**Batch No.:** 9

CAS Number: 96850-13-4

IUPAC Name: (1*R*,3*S*)-*rel*-3-(3,4-Dichlorophenyl)-2,3-dihydro-*N*-methyl-1*H*-inden-1-amine hydrochloride

### 1. PHYSICAL AND CHEMICAL PROPERTIES

**Batch Molecular Formula:** C<sub>16</sub>H<sub>15</sub>Cl<sub>2</sub>N.HCl  
**Batch Molecular Weight:** 328.67  
**Physical Appearance:** Off-white solid  
**Solubility:** water to 10 mM with gentle warming  
DMSO to 100 mM  
**Storage:** Desiccate at RT  
**Batch Molecular Structure:**



### 2. ANALYTICAL DATA

**HPLC:** Shows 99.9% purity  
**<sup>1</sup>H NMR:** Consistent with structure  
**Mass Spectrum:** Consistent with structure

**Microanalysis:**

	Carbon	Hydrogen	Nitrogen
Theoretical	58.47	4.91	4.26
Found	58.39	4.91	4.39

Caution - Not Fully Tested • Research Use Only • Not For Human or Veterinary Use

**bio-techne.com**  
[info@bio-techne.com](mailto:info@bio-techne.com)  
[techsupport@bio-techne.com](mailto:techsupport@bio-techne.com)

**North America**  
Tel: (800) 343 7475

**China**  
[info.cn@bio-techne.com](mailto:info.cn@bio-techne.com)  
Tel: +86 (21) 52380373

**Europe Middle East Africa**  
Tel: +44 (0)1235 529449

**Rest of World**  
[www.tocris.com/distributors](http://www.tocris.com/distributors)  
Tel: +1 612 379 2956

**Product Name:** Indatraline hydrochloride

**Catalog No.:** 1588

**Batch No.:** 9

CAS Number: 96850-13-4

IUPAC Name: (1*R*,3*S*)-*rel*-3-(3,4-Dichlorophenyl)-2,3-dihydro-*N*-methyl-1*H*-inden-1-amine hydrochloride

**Description:**

Indatraline hydrochloride is a potent monoamine uptake inhibitor. Inhibits transporters for 5-HT (SERT), dopamine (DAT) and noradrenaline (NET) ( $K_i$  values are 0.42, 1.7 and 5.8 nM respectively). Centrally active following systemic administration in vivo.

**Physical and Chemical Properties:**

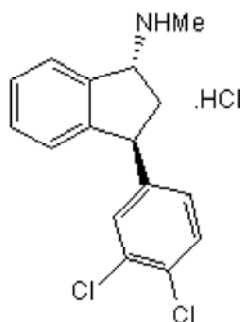
Batch Molecular Formula: C<sub>16</sub>H<sub>15</sub>Cl<sub>2</sub>N.HCl

Batch Molecular Weight: 328.67

Physical Appearance: Off-white solid

**Minimum Purity:** ≥99%

**Batch Molecular Structure:**



**Storage:** Desiccate at RT

**Solubility & Usage Info:**

water to 10 mM with gentle warming  
DMSO to 100 mM

**Stability and Solubility Advice:**

Some solutions can be difficult to obtain and can be encouraged by rapid stirring, sonication or gentle warming (in a 45-60°C water bath).

Information concerning product stability, particularly in solution, has rarely been reported and in most cases we can only offer a general guide. Our standard recommendations are:

**SOLIDS:** Provided storage is as stated on the product label and the vial is kept tightly sealed, the product can be stored for up to 6 months from date of receipt.

**SOLUTIONS:** We recommend that stock solutions, once prepared, are stored aliquoted in tightly sealed vials at -20°C or below and used within 1 month. Wherever possible solutions should be made up and used on the same day.

**References:**

**Gu et al** (2000) Design, synthesis, and monoamine transporter binding site affinities of methoxy derivatives of indatraline. *J.Med.Chem.* **43** 4868. PMID: 11123996.

**Negus et al** (1999) Effects of the long-acting monoamine reuptake inhibitor indatraline on cocaine self-administration in rhesus monkeys. *J.Pharmacol.Exp.Ther.* **291** 60. PMID: 10490887.

**Hyttel and Larsen** (1985) Neurochemical profile of Lu 19-005, a potent inhibitor of uptake of DA, noradrenaline and serotonin. *J.Neurochem.* **44** 1615. PMID: 2580950.

Caution - Not Fully Tested • Research Use Only • Not For Human or Veterinary Use

**bio-techne.com**

info@bio-techne.com

techsupport@bio-techne.com

**North America**

Tel: (800) 343 7475

**China**

info.cn@bio-techne.com

Tel: +86 (21) 52380373

**Europe Middle East Africa**

Tel: +44 (0)1235 529449

**Rest of World**

www.tocris.com/distributors

Tel:+1 612 379 2956