

**Product Name:** Luzindole

**Catalog No.:** 0877

**Batch No.:** 3

CAS Number: 117946-91-5

IUPAC Name: *N*-Acetyl-2-benzyltryptamine

**1. PHYSICAL AND CHEMICAL PROPERTIES**

**Batch Molecular Formula:** C<sub>19</sub>H<sub>20</sub>N<sub>2</sub>O.¼H<sub>2</sub>O

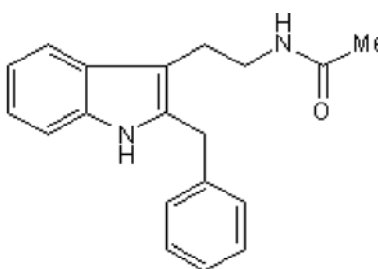
**Batch Molecular Weight:** 296.88

**Physical Appearance:** Pale yellow solid

**Solubility:** DMSO to 100 mM

**Storage:** Store at -20°C

**Batch Molecular Structure:**



**2. ANALYTICAL DATA**

**TLC:** R<sub>f</sub> = 0.4 (Ethyl acetate:Petroleum ether [3:1])

**HPLC:** Shows 100% purity

**<sup>1</sup>H NMR:** Consistent with structure

**Mass Spectrum:** Consistent with structure

**Microanalysis:**

	Carbon	Hydrogen	Nitrogen
Theoretical	76.87	6.96	9.44
Found	77.12	7.01	9.55

Caution - Not Fully Tested • Research Use Only • Not For Human or Veterinary Use

**bio-techne.com**

info@bio-techne.com

techsupport@bio-techne.com

**North America**

Tel: (800) 343 7475

**China**

info.cn@bio-techne.com

Tel: +86 (21) 52380373

**Europe Middle East Africa**

Tel: +44 (0)1235 529449

**Rest of World**

www.tocris.com/distributors

Tel:+1 612 379 2956

**Product Name:** Luzindole

**Catalog No.:** 0877

**Batch No.:** 3

CAS Number: 117946-91-5

IUPAC Name: *N*-Acetyl-2-benzyltryptamine

**Description:**

Melatonin antagonist.

**Physical and Chemical Properties:**

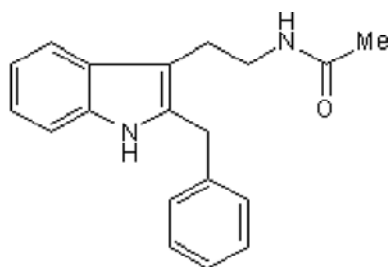
Batch Molecular Formula: C<sub>19</sub>H<sub>20</sub>N<sub>2</sub>O.¼H<sub>2</sub>O

Batch Molecular Weight: 296.88

Physical Appearance: Pale yellow solid

**Minimum Purity:** >99%

**Batch Molecular Structure:**



**Storage:** Store at -20°C. This product is packaged under an inert atmosphere.

**Solubility & Usage Info:**

DMSO to 100 mM

**Stability and Solubility Advice:**

Some solutions can be difficult to obtain and can be encouraged by rapid stirring, sonication or gentle warming (in a 45-60°C water bath).

Information concerning product stability, particularly in solution, has rarely been reported and in most cases we can only offer a general guide. Our standard recommendations are:

**SOLIDS:** Provided storage is as stated on the product label and the vial is kept tightly sealed, the product can be stored for up to 6 months from date of receipt.

**SOLUTIONS:** We recommend that stock solutions, once prepared, are stored aliquoted in tightly sealed vials at -20°C or below and used within 1 month. Wherever possible solutions should be made up and used on the same day.

**Other Information:**

**INFORMATION FOR CUSTOMERS IN THE UK ONLY**

This product is a Schedule 1 Home Office controlled substance and customers in the UK are required to hold the relevant licence or be exempt from restrictions in order to purchase and possess this material.

**References:**

**Dubocovich** (1995) Melatonin receptors: are there multiple subtypes? *TIPS* **16** 50. PMID: 7762083.

**Dubocovich et al** (1990) Anti-depressant-like activity of the melatonin receptor antagonist, luzindole (N-0774), in mouse behavioural despair test. *Eur.J.Pharmacol.* **182** 313. PMID: 2168835.

**Dubocovich** (1988) Luzindole (N-0774): a novel melatonin receptor antagonist. *J.Pharmacol.Exp.Ther.* **246** 902. PMID: 2843633.

Caution - Not Fully Tested • Research Use Only • Not For Human or Veterinary Use

**bio-techne.com**

info@bio-techne.com  
techsupport@bio-techne.com

**North America**

Tel: (800) 343 7475

**China**

info.cn@bio-techne.com  
Tel: +86 (21) 52380373

**Europe Middle East Africa**

Tel: +44 (0)1235 529449

**Rest of World**

www.tocris.com/distributors  
Tel:+1 612 379 2956