

**Product Name:** BTCP maleate

**Catalog No.:** 0702

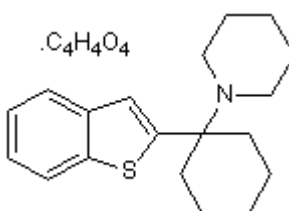
**Batch No.:** 1

CAS Number: 207455-25-2

IUPAC Name: 1-[1-(2-Benzo[*b*]thienyl)cyclohexyl]piperidine maleate

**1. PHYSICAL AND CHEMICAL PROPERTIES**

**Batch Molecular Formula:** C<sub>19</sub>H<sub>25</sub>NS.C<sub>4</sub>H<sub>4</sub>O<sub>4</sub>  
**Batch Molecular Weight:** 415.55  
**Physical Appearance:** Light yellow crystalline solid  
**Solubility:** DMSO to 100 mM  
**Storage:** Desiccate at +4°C  
**Batch Molecular Structure:**



**2. ANALYTICAL DATA**

**Melting Point:** Between 162 - 163°C  
**HPLC:** Shows >98.1% purity  
**Mass Spectrum:** Consistent with structure  
**Microanalysis:**

	Carbon	Hydrogen	Nitrogen
Theoretical	66.48	7.03	3.37
Found	66.1	7.01	3.29

Caution - Not Fully Tested • Research Use Only • Not For Human or Veterinary Use

**Product Name:** BTCP maleate

**Catalog No.:** 0702

**Batch No.:** 1

CAS Number: 207455-25-2

IUPAC Name: 1-[1-(2-Benzo[*b*]thienyl)cyclohexyl]piperidine maleate

**Description:**

A potent dopamine re-uptake inhibitor with a behavioral profile different from that of PCP and similar to that of cocaine.

**Physical and Chemical Properties:**

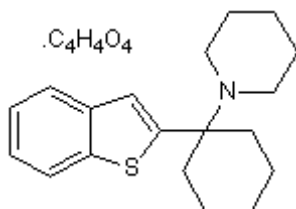
Batch Molecular Formula: C<sub>19</sub>H<sub>25</sub>NS.C<sub>4</sub>H<sub>4</sub>O<sub>4</sub>

Batch Molecular Weight: 415.55

Physical Appearance: Light yellow crystalline solid

**Minimum Purity:** >98%

**Batch Molecular Structure:**



**Storage:** Desiccate at +4°C

**Solubility & Usage Info:**

DMSO to 100 mM

**Stability and Solubility Advice:**

Some solutions can be difficult to obtain and can be encouraged by rapid stirring, sonication or gentle warming (in a 45-60°C water bath).

Information concerning product stability, particularly in solution, has rarely been reported and in most cases we can only offer a general guide. Our standard recommendations are:

**SOLIDS:** Provided storage is as stated on the product label and the vial is kept tightly sealed, the product can be stored for up to 6 months from date of receipt.

**SOLUTIONS:** We recommend that stock solutions, once prepared, are stored aliquoted in tightly sealed vials at -20°C or below and used within 1 month. Wherever possible solutions should be made up and used on the same day.

**References:**

**Vignon *et al*** (1988) [<sup>3</sup>H]N-[1-(2-benzo[*b*]thiophenyl)cyclohexyl]piperidine ([<sup>3</sup>H]BTCP): a new phencyclidine analogue selective for the dopamine uptake complex. *Eur.J.Pharmacol.* **148** 427. PMID: 3384005.

**Koek *et al*** (1989) The phencyclidine (PCP) analogue N-[1-(2-benzo(*b*)thiophenyl)cyclohexyl]piperidine shares cocaine-like but not other characteristic behavioural effects with PCP, ketamine and MK-801. *J.Pharmacol.Exp.Ther.* **250** 1019. PMID: 2674416.

**Chergui *et al*** (1992) Inhibition of the locus coeruleus neurons by the phenylcyclidine analog, N-[1-(2-benzo(*b*)thiophenyl)cyclohexyl]-piperidine: evidence for potent indirect adrenoceptor agonist properties. *Eur.J.Pharmacol.* **219** 169. PMID: 1397045.

Caution - Not Fully Tested • Research Use Only • Not For Human or Veterinary Use

**bio-techne.com**

info@bio-techne.com

techsupport@bio-techne.com

**North America**

Tel: (800) 343 7475

**China**

info.cn@bio-techne.com

Tel: +86 (21) 52380373

**Europe Middle East Africa**

Tel: +44 (0)1235 529449

**Rest of World**

www.tocris.com/distributors

Tel:+1 612 379 2956